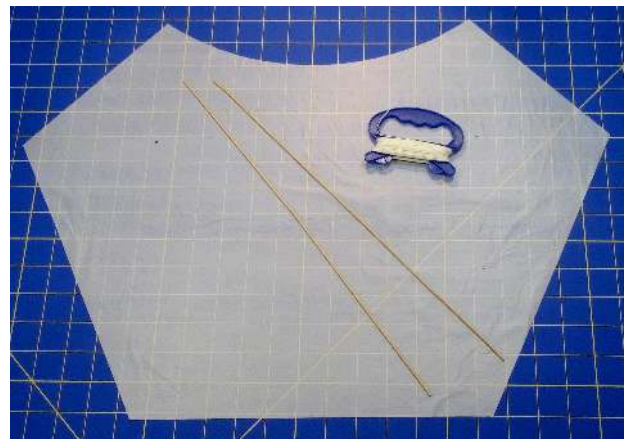


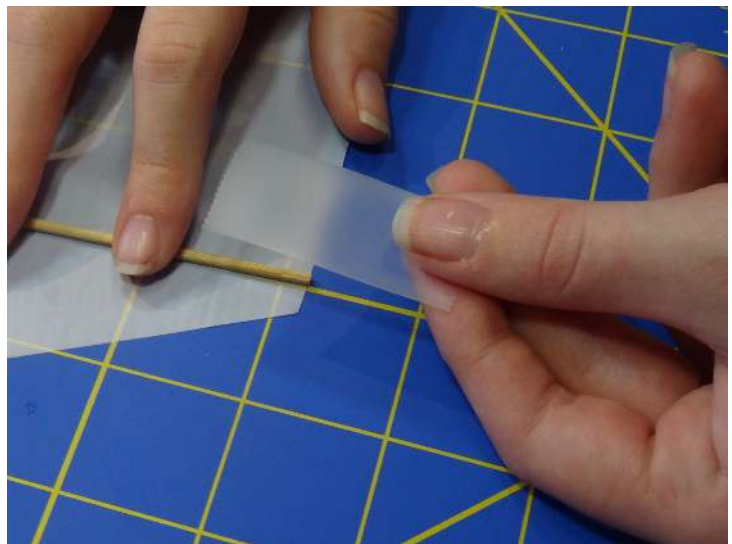
Dermer Sled Kite



← Weave the bamboo spars through the holes in the skin as shown.

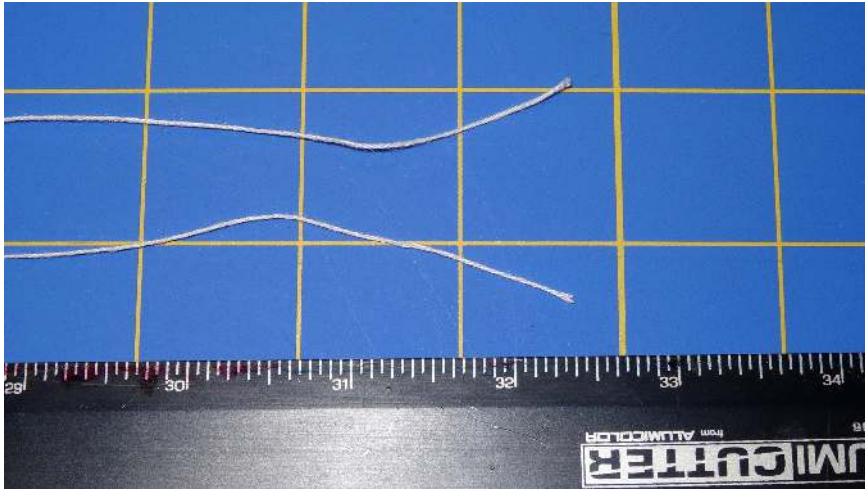
Tape down each corner: →
Using 2-3" of tape, put ½ of the on the spar and skin and the other ½ onto the table.

(to hold the kite skin down while art is added)



Add art-work to your kite.

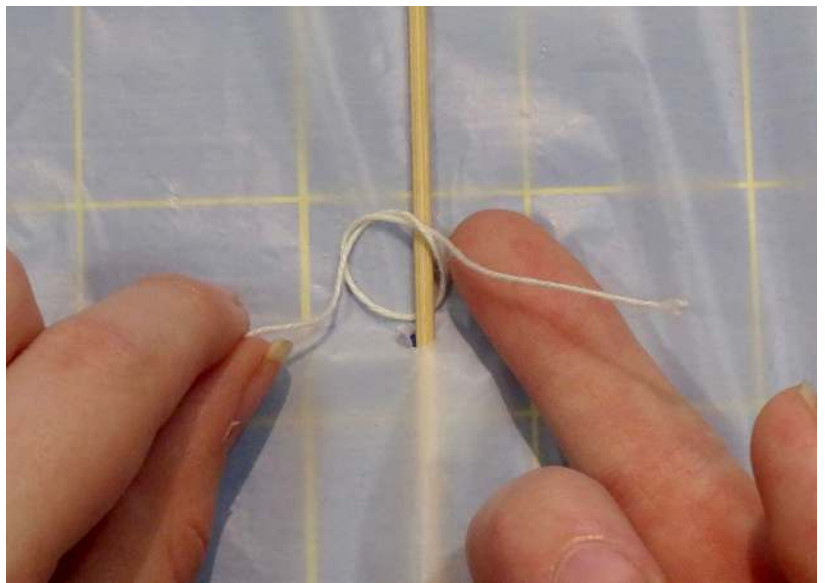
It's easy to 'trace' art if you want.



Cut 60" to 72" of line, from your winders, to make the "bridle".

Take 1 end of the cut bridle line.

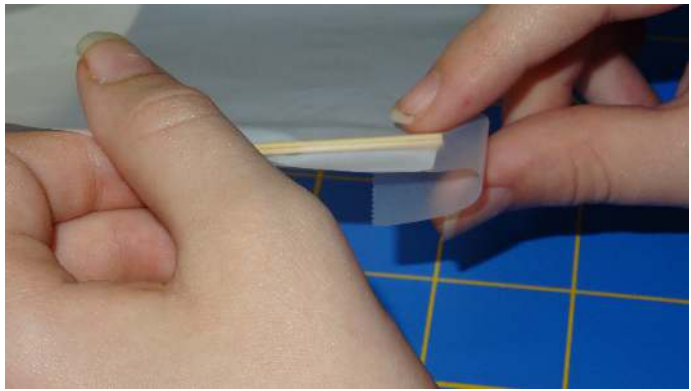
Tie to the left spar, over the top hole, with 1 over hand knot, as shown.



Tape this line down, from the spar out to the wing tip.

Repeat this on the right side of the kite.

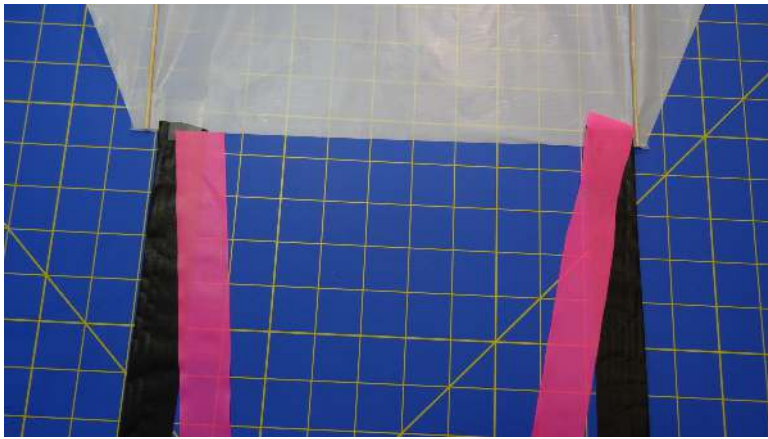
Lift each corner up from the table and fold the tape over the back of the kite, creating a pocket and sealing the spars into place.



Add tail to the kite with tape. 3-8 Feet is plenty.

There are many ways to add tail.

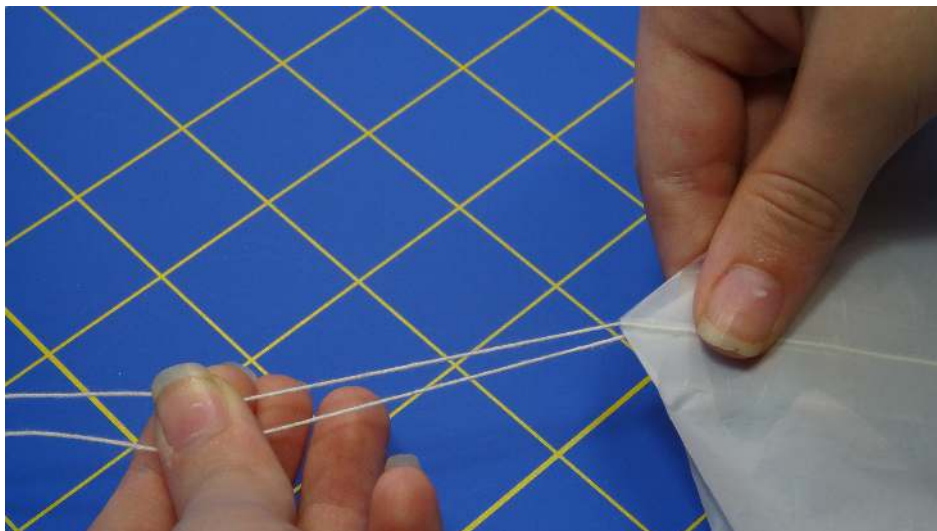




Less wind = Less Tail

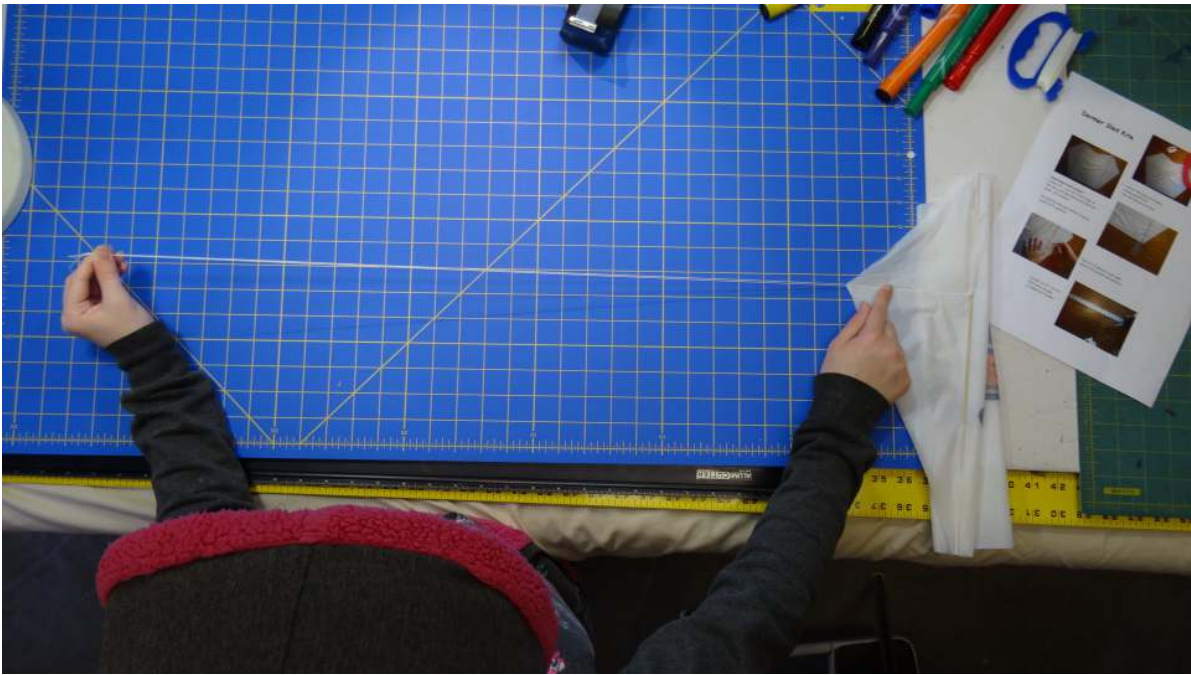
More wind = More Tail

Make sure tails are balanced (length and number) on the left and right



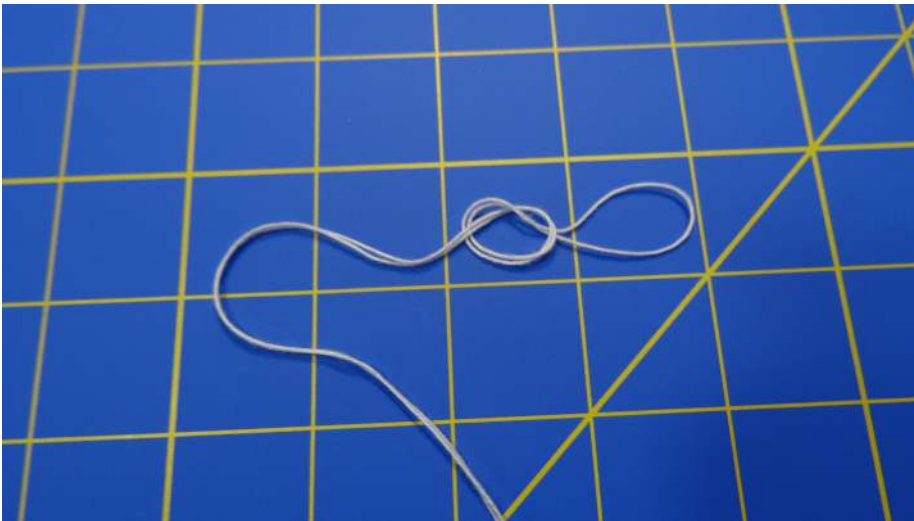
Final Step!

Find the center of the bridle line: Fold the kite in half, matching the wing tips exactly.



Run your fingers out to the end of the loop and tie a simple over hand knot, making about a 2" loop on the end of the bridle line.

Tie your flying line to this loop.



Your kite is ready to Fly.

www.kitesinthesky.net